

Urban Forestry Institute



Nashville, Tennessee
May 8, 2013



Urban Forestry Institute

Central Themes:

1. Technical competence is a must.
2. Urban forestry is as much about solving people problems as solving tree problems.
3. Use creativity to solve people problems. The city is a blank canvas and you're the artist!



Urban Forestry Institute

**Session: Writing Contracts, Specifications,
Using ANSI Standards, BMP's, Working with
Arborists and Utility Foresters.**



Urban Forestry Institute

- **ANSI A300 Standards, ANSI Z133.1 Safety Requirements, MUTCD.**
- **Pruning and removal contract. (1-A) handout**
- **Collaboration with the EPB. (1-B) handout**
- **Writing Pruning Specs. (1-B) handout**



Pruning Specifications

- Clearly define pruning objectives.
- Clearly state which trees are to be pruned.
- State that all work will conform to ANSI A300 pruning standards and ANSI Z133.1 safety standards.
- Specify pruning types to be performed.
- State size specifications of the minimum and maximum branch sizes to be removed.
- Specify max. amount of live tissue to be removed. Example: 15%.

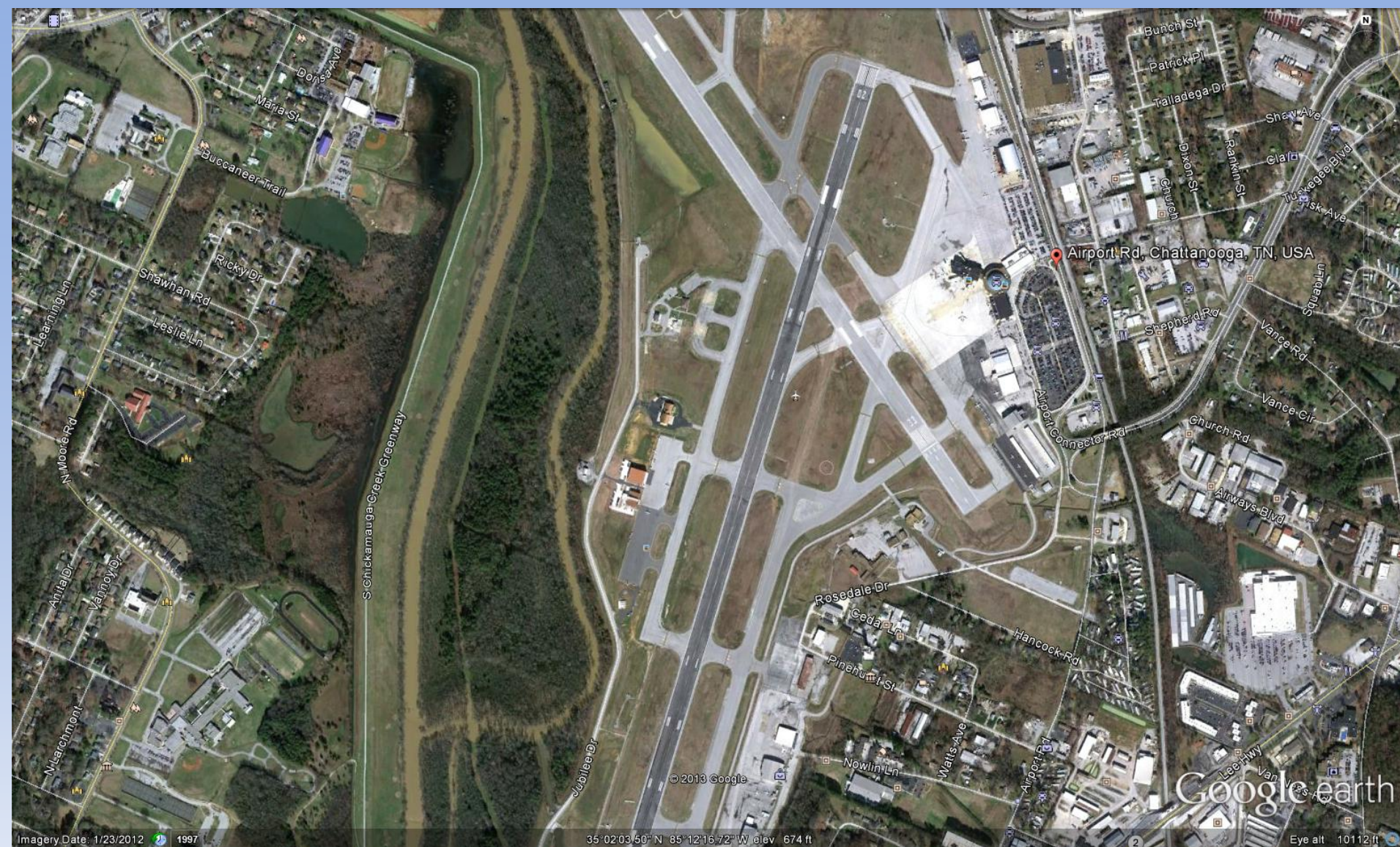


Urban Forestry Institute

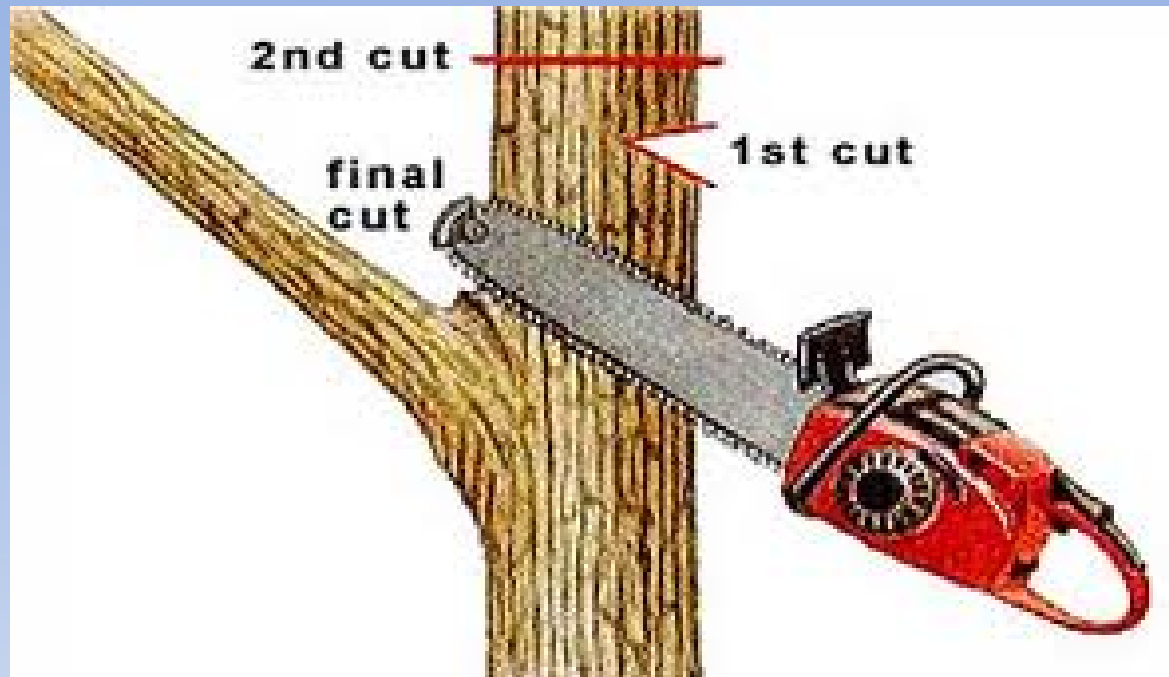
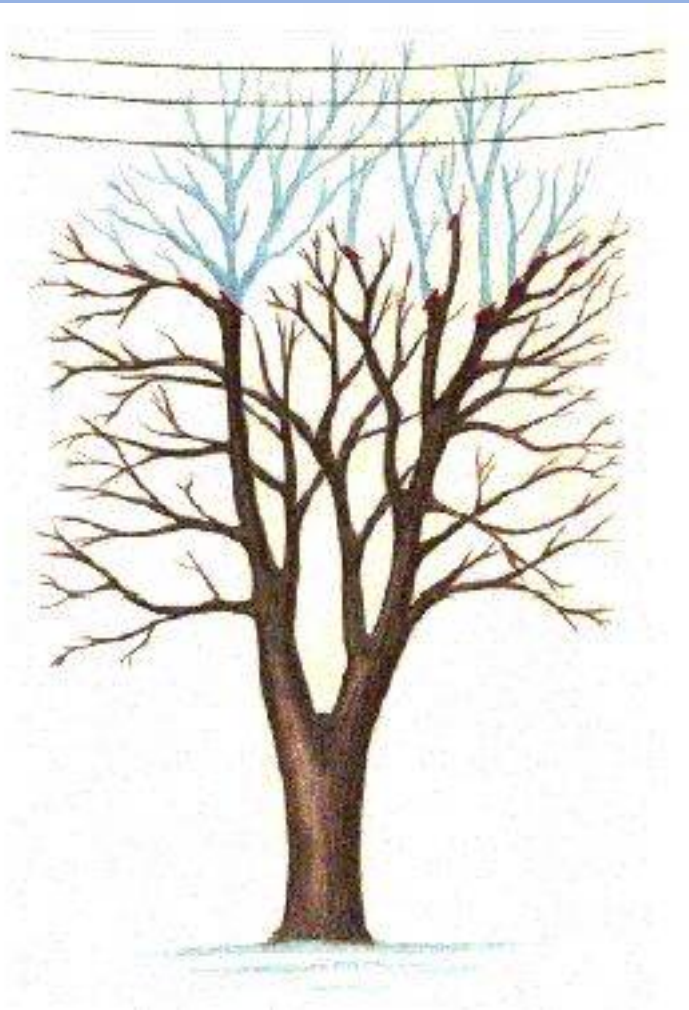
- **Volunteers as a possible resource. (See Take Root Power Point)**
- **PP on Peace Grove**
- **Airport Project. (Handout 2-A)**
- **Milling and Paving. (Handout 2-B)**
- **State of the Trees Report. (handout 2-C)**



Airport and Greenway



Drop Crotch Pruning/ Crown Reduction



Milling Machine (handout 2-B)



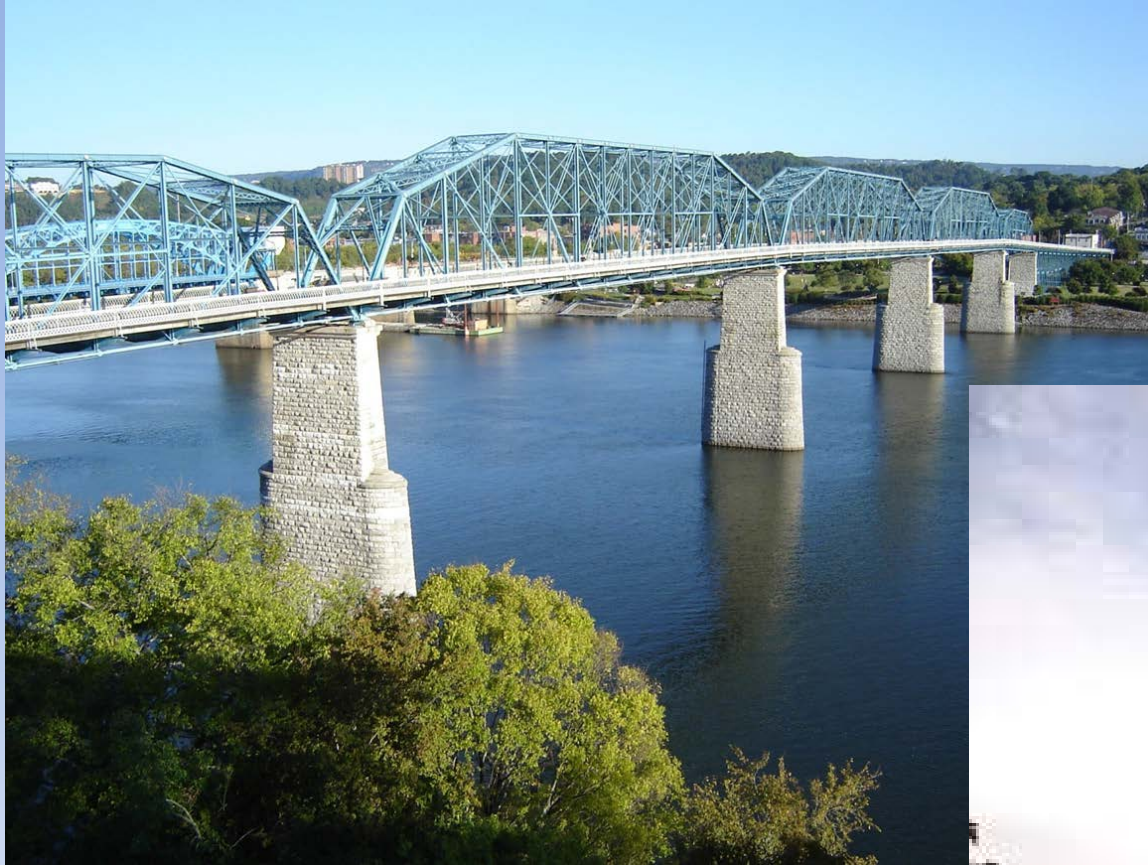
Sidewalk Ramping



EAB Trapping Project



Bridges or Kingdoms?



Urban Forestry Institute

**Session: Storm Preparedness, Tree Planting,
Pruning and Removal.**



Urban Forestry Institute

- **Storm preparedness. (Handout 3-A and PP)**
- **Tree Risk Assessment. (Handout 3-B)**
- **Tree Planting Contract. (Handout 3-C)**
- **Tree Pruning Calculations. (Handout 3-D)**





URBAN FORESTRY EMERGENCY OPERATIONS PLANNING GUIDE FOR STORM RESPONSE

- Safety
- Communications
- Planning
- Contracts
- Incident Command
- Inventory
- Mutual Aid Agreement
- Training
- Vegetative Debris
- Vulnerability
- Conducting a Vulnerability Assessment
- Resources

<http://smarttreespacific.org>

Maintenance Calculations

	0-6"	7"-12"	13"-24"	26"-36"	36"+	Totals
Small	471	136	7	0	0	614
Medium	587	366	124	3	0	1,080
Large	1,590	408	415	155	77	2,645
Totals	2,648	910	546	158	77	4,339
Hrs/Tree	1	1.4	3.5	6.3	7	
TOTAL HR	2,648	1,274	1,911	995	539	7,367



Why to Call Before You Dig!



Why to Call Before You Dig!



Why to Call Before You Dig!



Why to Call Before You Dig!



Why to Call Before You Dig!



Why to Call Before You Dig!

